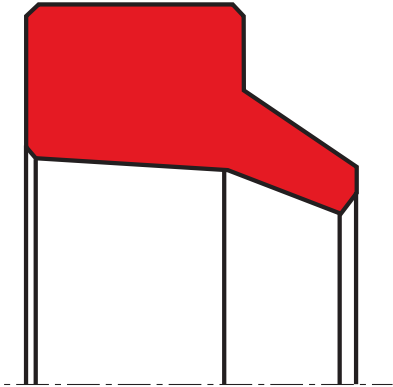


wiper A02-B

seal spec



description

wiper with interference fit on outside diameter. wiping edge assures a reliable protection against penetration of dust and dirt whilst allowing backflow of residual oil film.

- the seal profile and close machining tolerances provide a good static seal for the outside diameter, assisting in the prevention of ingress of humidity and foreign matter via the outside diameter.
- the design of the wiping lip aids the recovery of residual oil film while exclusion of foreign matter is maintained.
- pressure build up on the trailing side is to be avoided if possible.

application



not bolded symbols; please consult our technical for application limitations

category of profile

machined or molded/standard/trade product.

single acting

area of application: hydraulics

- reciprocating rods on hydraulic cylinders.
- push rods and valve stems.
- (materials must be selected according to operating requirements).
- the A02-I design is to be used for mounting spaces according to ISO 6195-1986.

function:

A02-B wipers are designed to keep dust, dirt, sand and metal chips away from the sealing and guiding elements, thereby avoiding abrasive damage caused by external contamination.

**operating parameters & material**

diameter range: up to 600 mm

material	temperature	max. surface speed	hydrolysis	dry running	wear resistance
s-mart PU	-30 °C ... +110 °C	4 m/s	-	+	++
s-mart HPU	-20 °C ... +110 °C	4 m/s	++	+	++
s-mart LTPU	-50 °C ... +110 °C	4 m/s	-	+	++
s-mart SPU	-20 °C ... +110 °C	5 m/s	++	++	++
s-mart GPU	-30 °C ... +110 °C	4 m/s	++	+	++
s-mart NBR	-30 °C ... +100 °C	4 m/s	-	-	O
s-mart FKM	-20 °C ... +200 °C	4 m/s	-	-	O
s-mart EPDM ²	-50 °C ... +150 °C	4 m/s	++	-	O
s-mart HNBR	-25 °C ... +150 °C	4 m/s	+	O	+
s-mart XPU	-30 °C ... +110 °C	4 m/s			
s-mart XHPU	-20 °C ... +110 °C	4 m/s			
s-mart XSPU	-20 °C ... +110 °C	5 m/s			

the stated operation conditions represent general indications. it is recommended not to use all maximum values simultaneously.
surface speed limits apply only to the presence of adequate lubrication film.

² attention: not suitable for mineral oils!

++ ... particularly suitable

o ... conditional suitable

+ ... suitable

- ... not suitable

for detailed information regarding chemical resistance please refer to our "list of resistance". for increased chemical and thermal resistance rubber materials are to be preferred, polyurethan materials increase wear resistance.

surface quality

surface roughness	Rtmax (µm)	Ra (µm)
sliding surface	according to seal data	
bottom of groove	≤6,3	≤1,6
groove face	≤15	≤3

tolerance recommendation

seal housing tolerances		cs	R [mm]
L < 10 mm	0,2	≤ 5	max. 0,3
L ≥ 10 mm	0,3	>5.....≤ 7,5	max. 0,4
D1	H11	>7,5.....≤ 10	max. 0,6
D	H11	> 10	max. 0,8

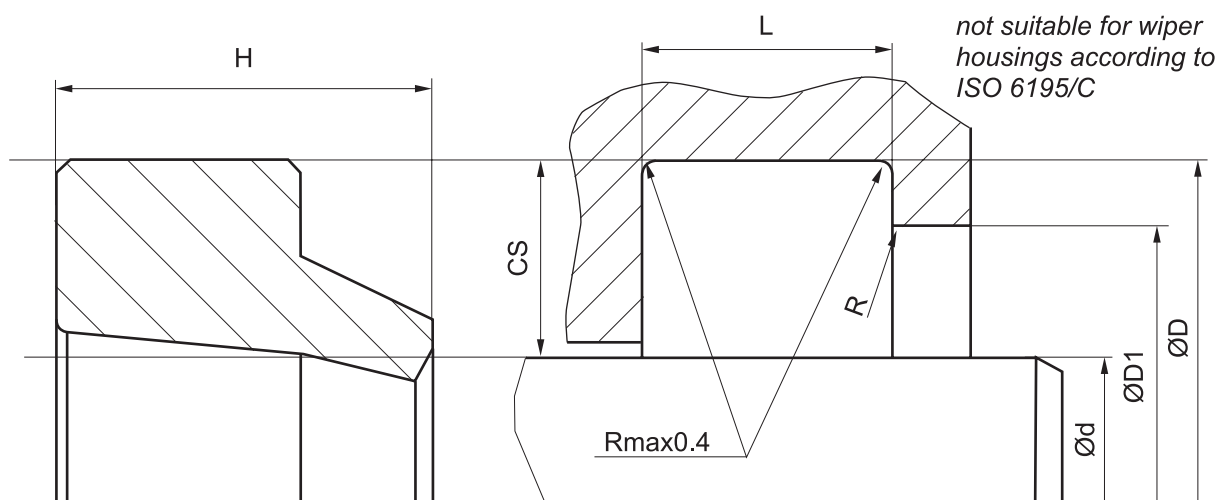
mode of installation

the prerequisites for perfect functioning are careful fitting and an accurately dimensioned mounting space. in general, wipers snap easily into their housings when distorted into a kidney shape (over 20mm diameter).



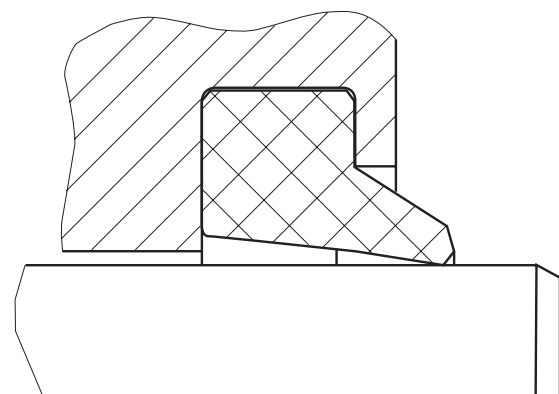
seal & housing recommendations

please note that we are able to produce those profiles to your specific need or any non standard housing. for detail measurements, please see seal-mart catalog...



not suitable for wiper housing according to ISO 6195/C.

fitted:



don't hesitate to contact our technical department for further information or for special requirements (temperature, speed etc.), so that suitable materials and/or designs can be recommended.